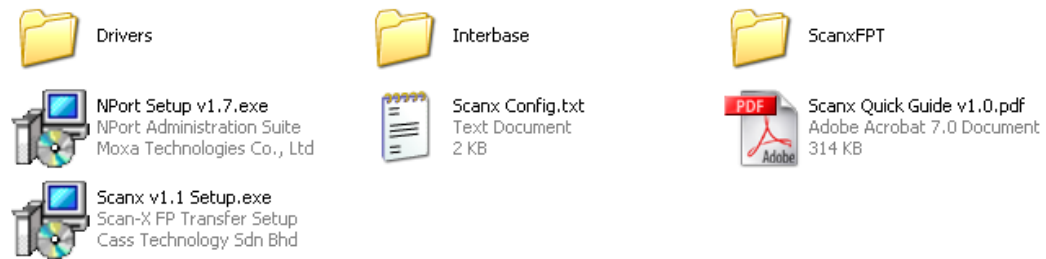
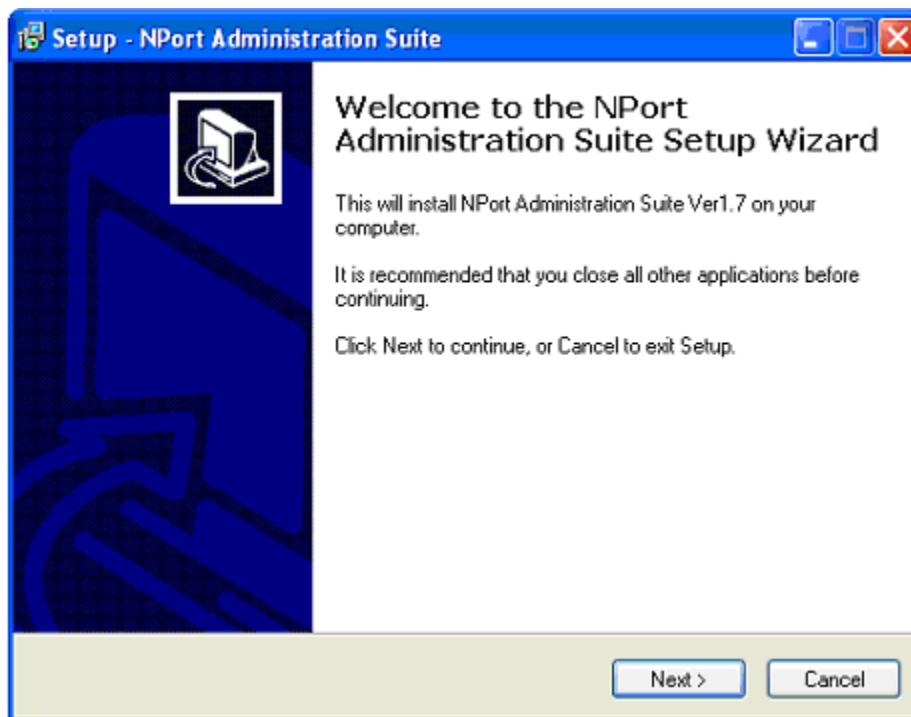


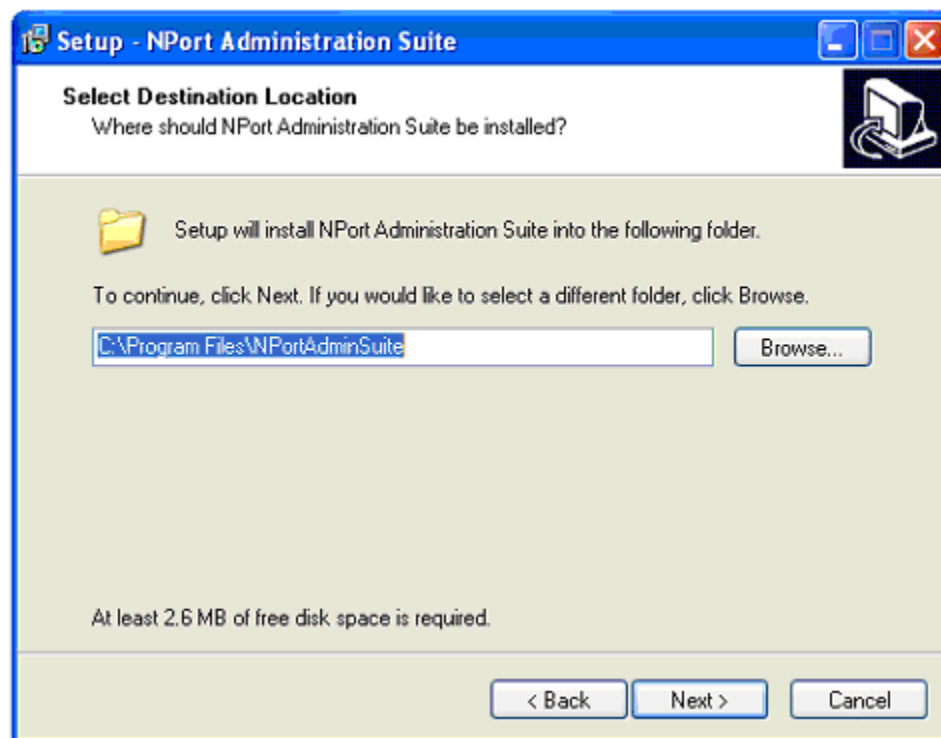
SETUP/CONFIGURATION THE NPORT



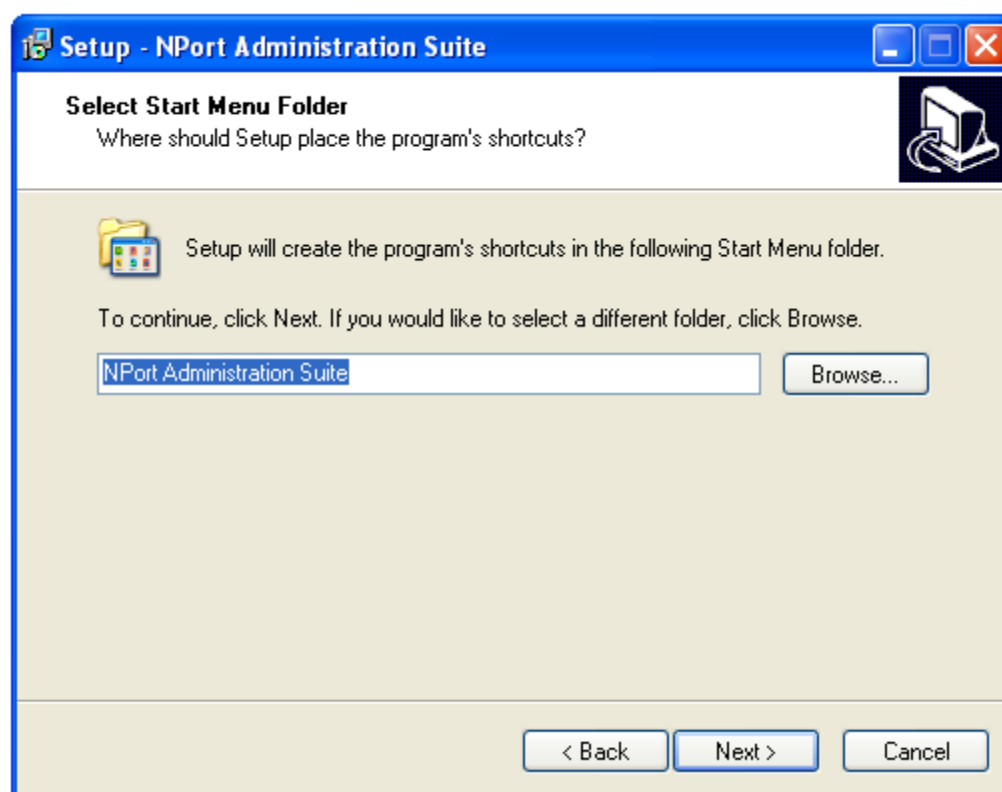
Double click on Nport setup v.1.7.exe



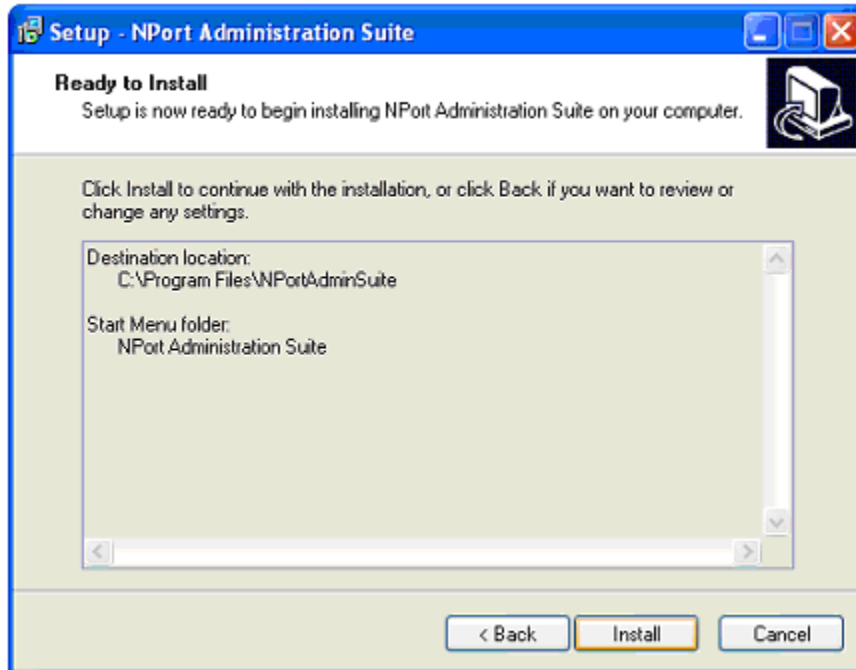
Click Next



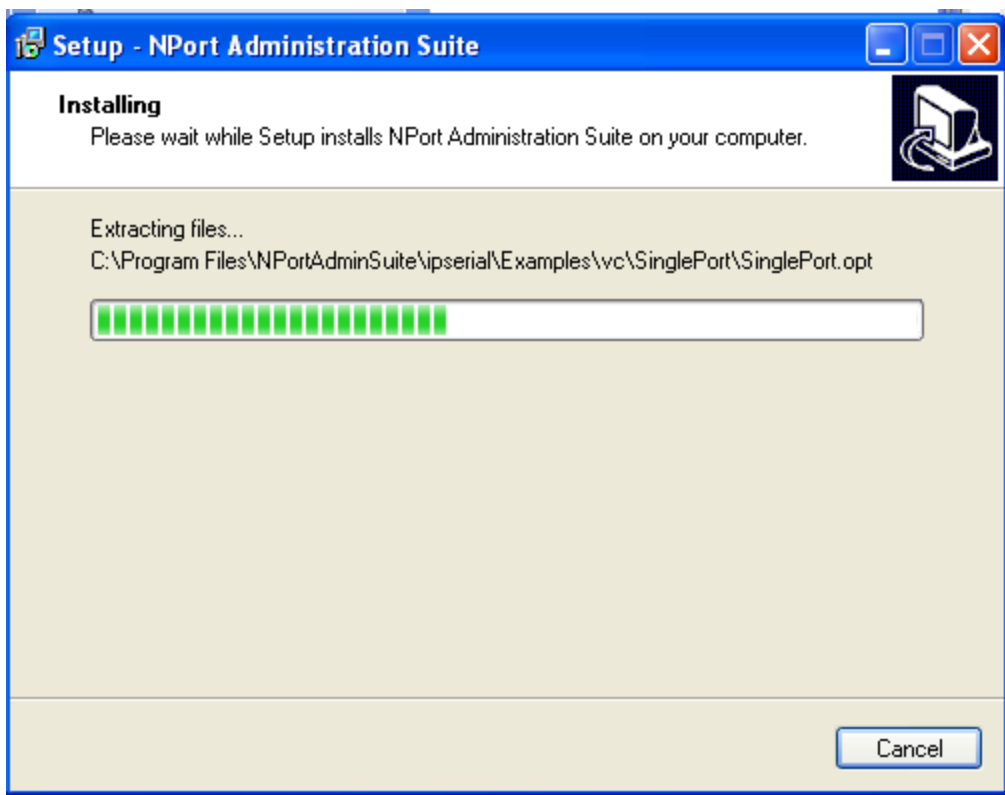
Click next

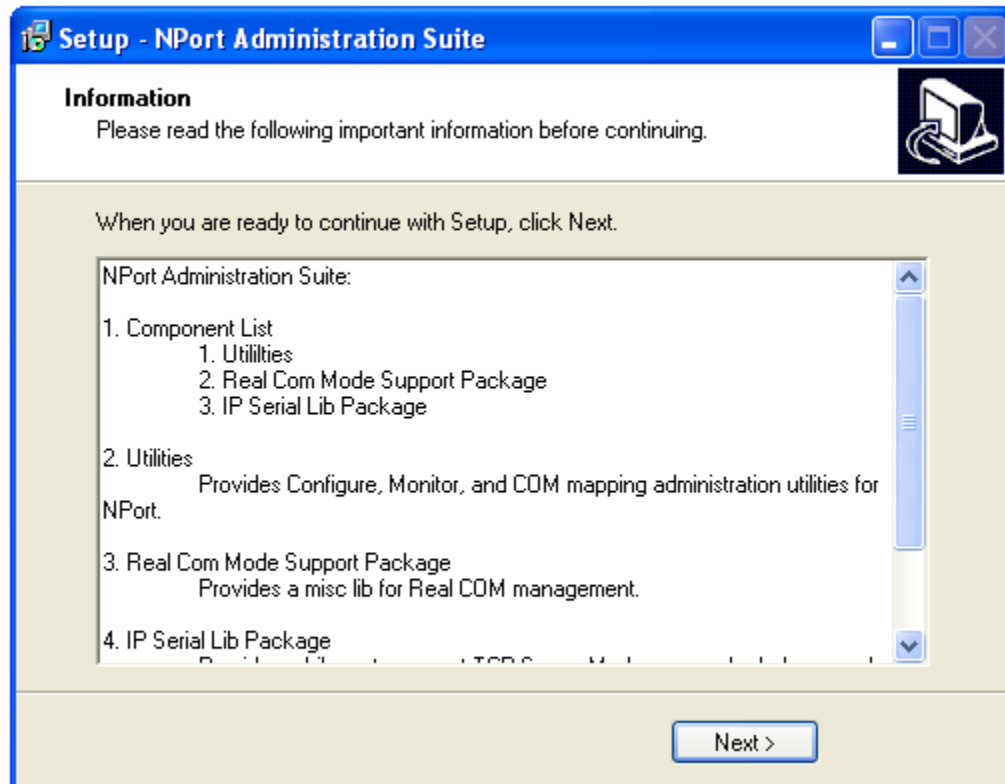


Click next

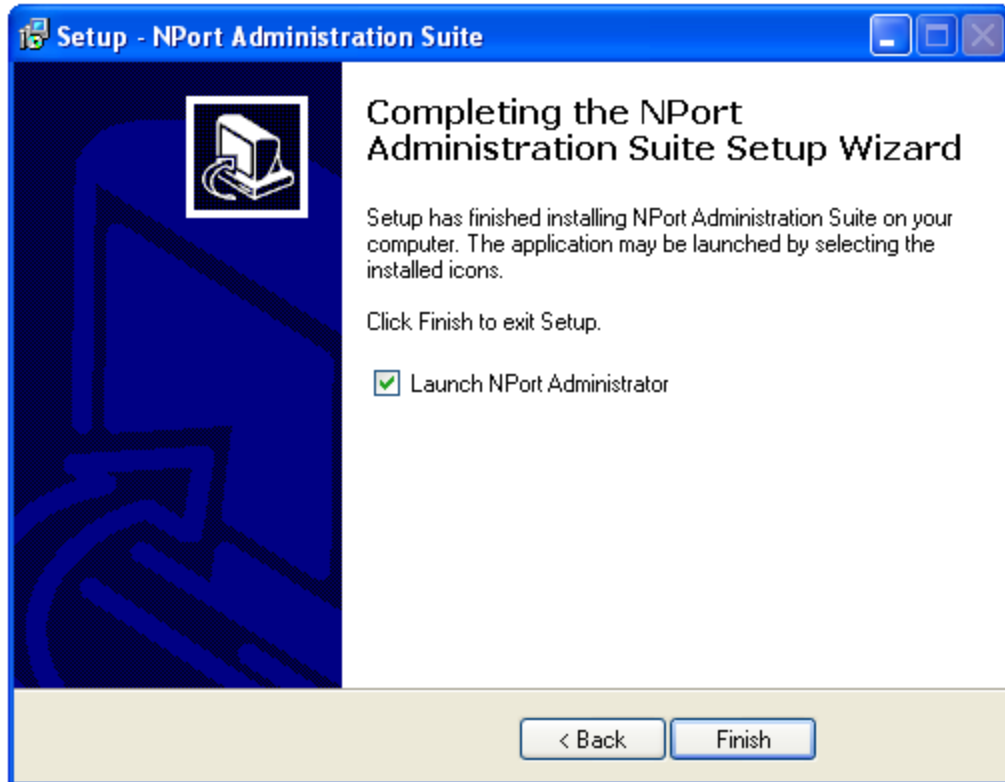


Click Install

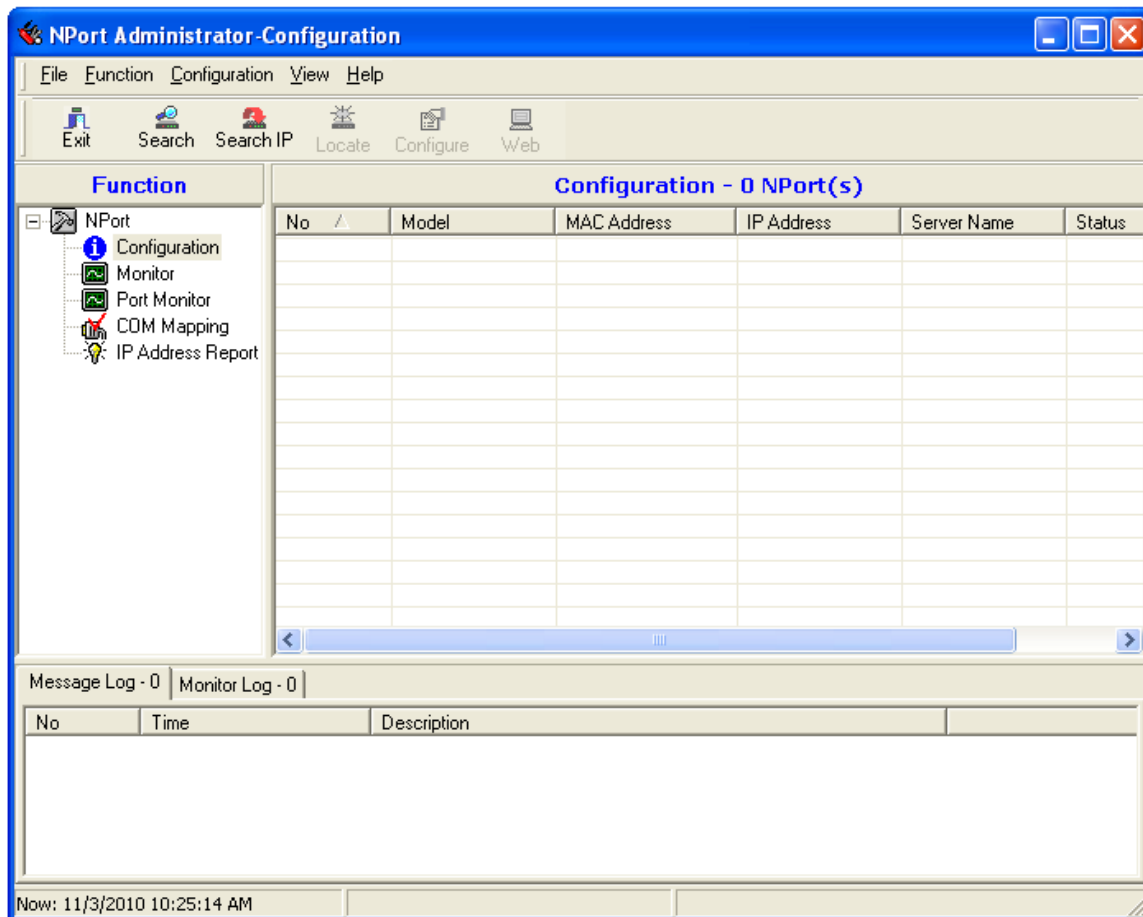




Click Next

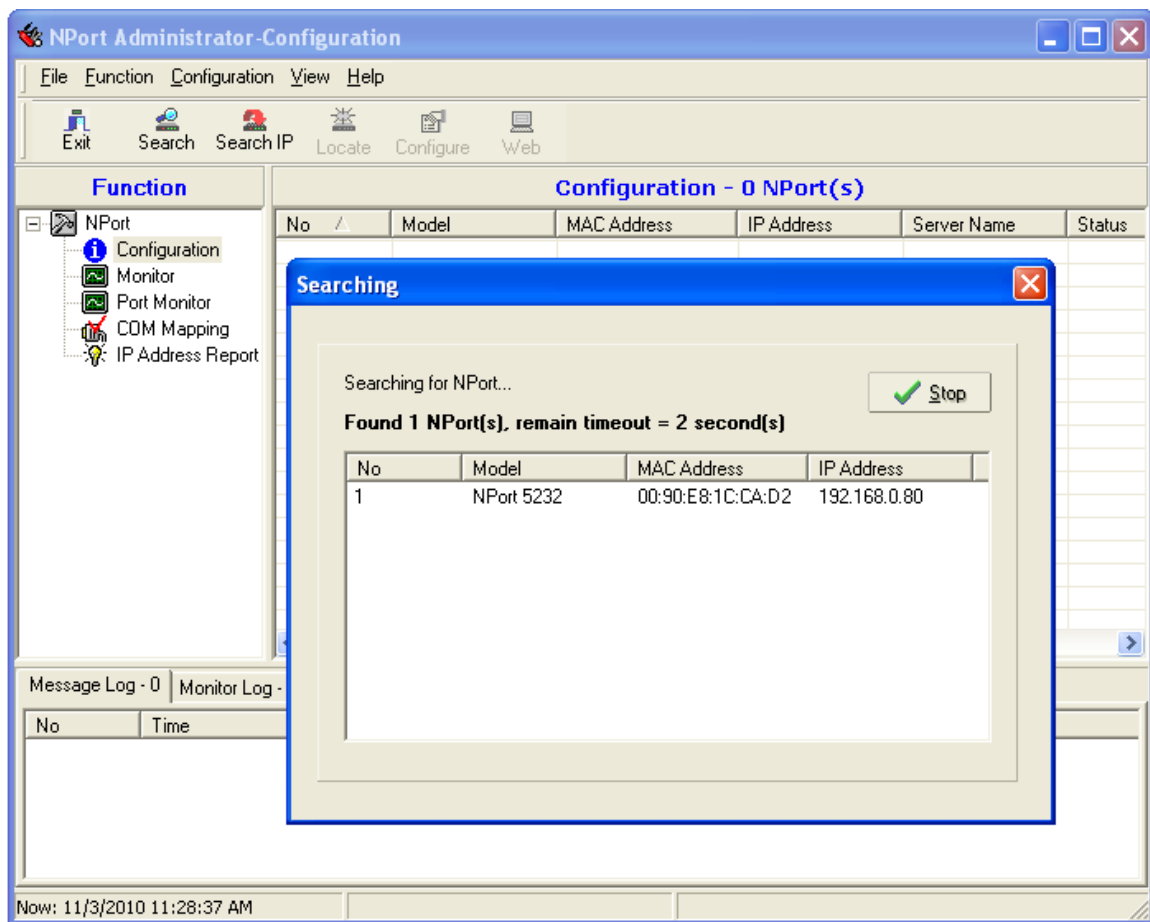


Click on Finish



After the setup on the Nport.

Plug in the LAN cable to Nport device and power up the device, click at the Search. Advisable to connect LAN cable from Nport directly to PC for initial configuration. If you can find any NPort after click Search, please change your PC IP address similar to NPort IP address which is 192.168.127.254. Make your PC IP address like 192.168.127.200. Then click Search again. You should detect the Nport.





Once it detected the IP, click on configure.

NPort Administrator-Configuration

File Function Configuration View Help

Exit Search Search IP Locate Configure Web

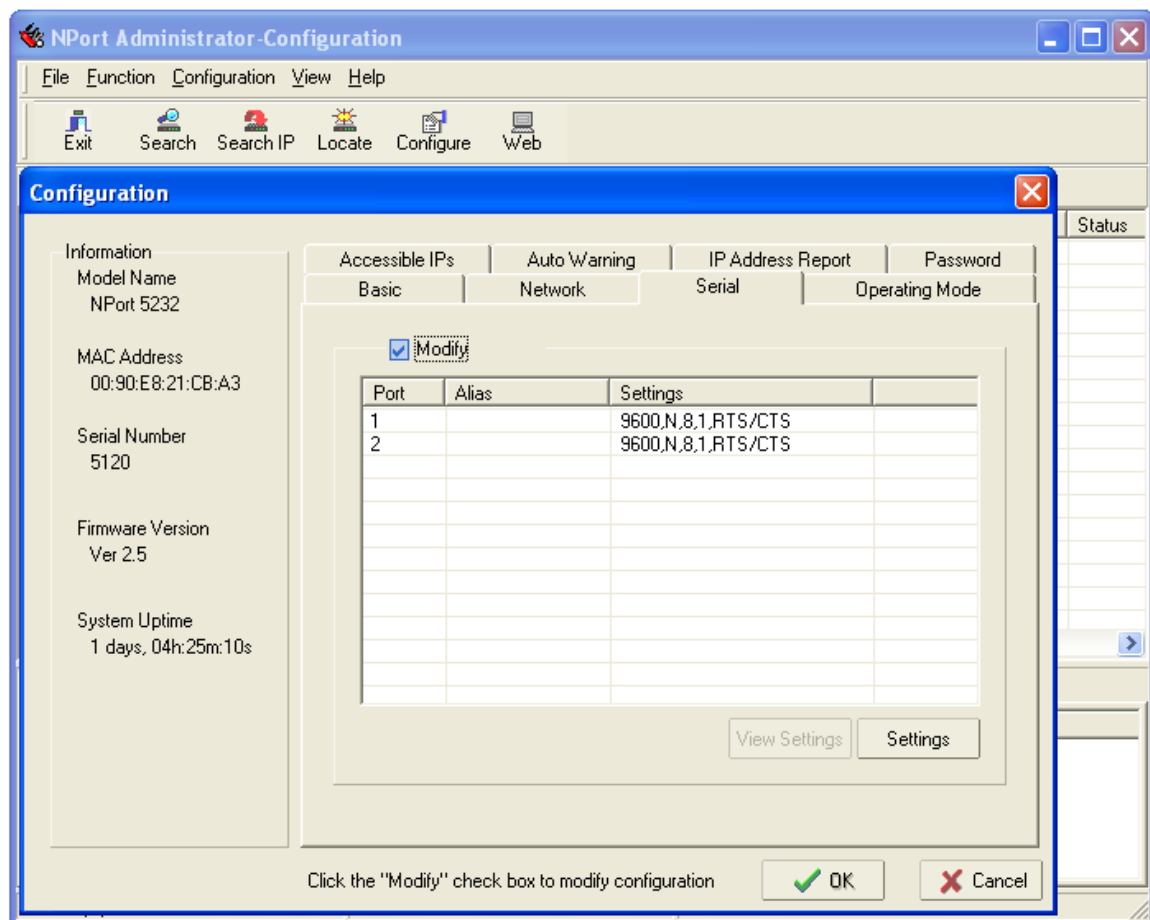
Configuration

| Information | Accessible IPs | Auto Warning | IP Address Report | Password |
|--------------------------------------|---|--------------|-------------------|----------------|
| | Basic | Network | Serial | Operating Mode |
| Model Name NPort 5232 | <input checked="" type="checkbox"/> Modify IP Address: 192.168.0.85 | | | |
| MAC Address 00:90:E8:21:CB:A3 | <input type="checkbox"/> Modify Netmask: 255.255.255.0 Gateway: IP Configuration: Static DNS Server 1: DNS Server 2: | | | |
| Serial Number 5120 | <input type="checkbox"/> Modify <input checked="" type="checkbox"/> Enable SNMP Community Name: public Location: Contact: | | | |
| Firmware Version Ver 2.5 | | | | |
| System Uptime 1 days, 04h:15m:04s | | | | |

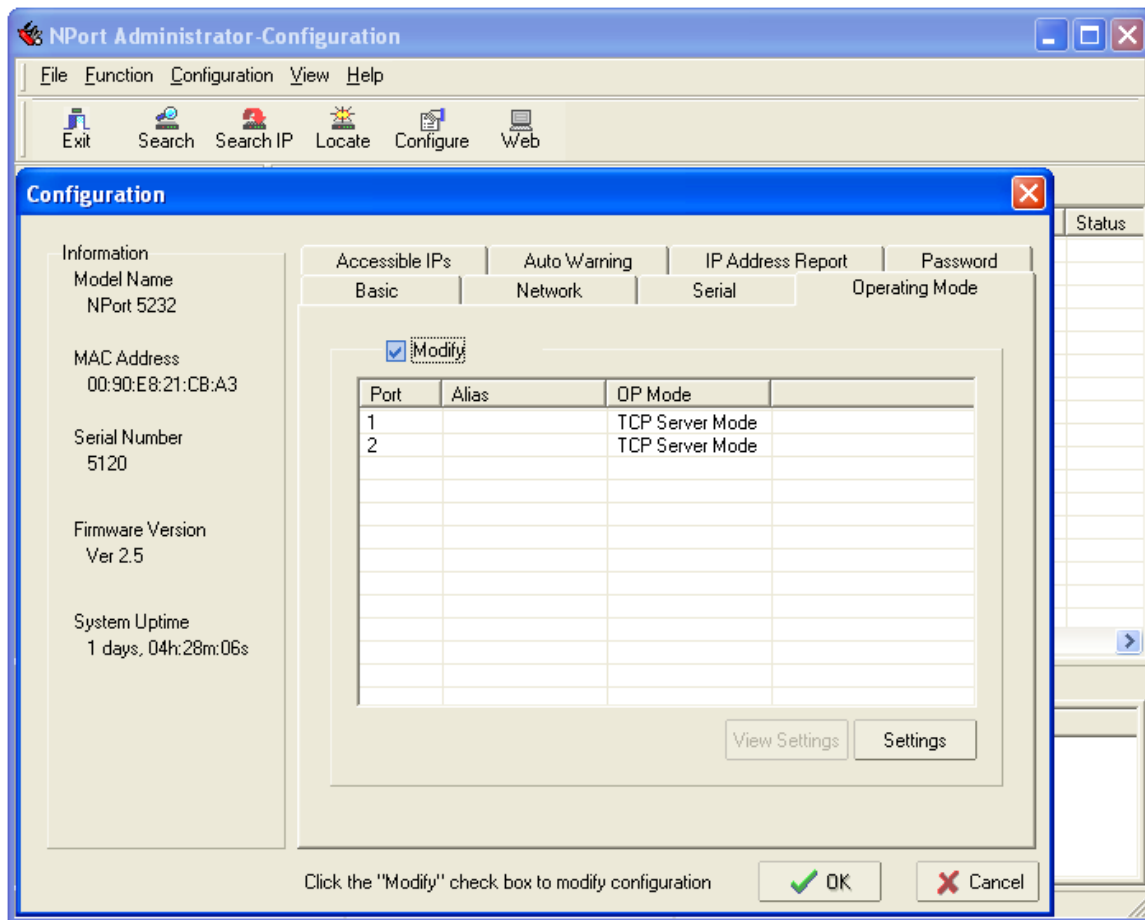
Click the "Modify" check box to modify configuration

OK Cancel

Click on Network; check in the Modify boxes, for the IP Address, Netmask and Gateway address.



Check at the modify box, and choose the Serial, as shown in the picture above.



Check the modify box, for the Operating Mode, and click on TCP server mode. Click OK after finish editing above setting.